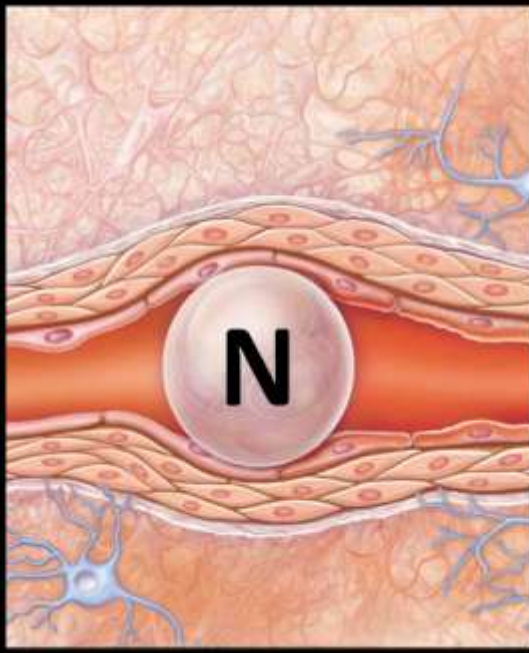


# LES RISQUES SPECIFIQUES

**ACC. TOXIQUE**



**ACC. DE DESATURATION**



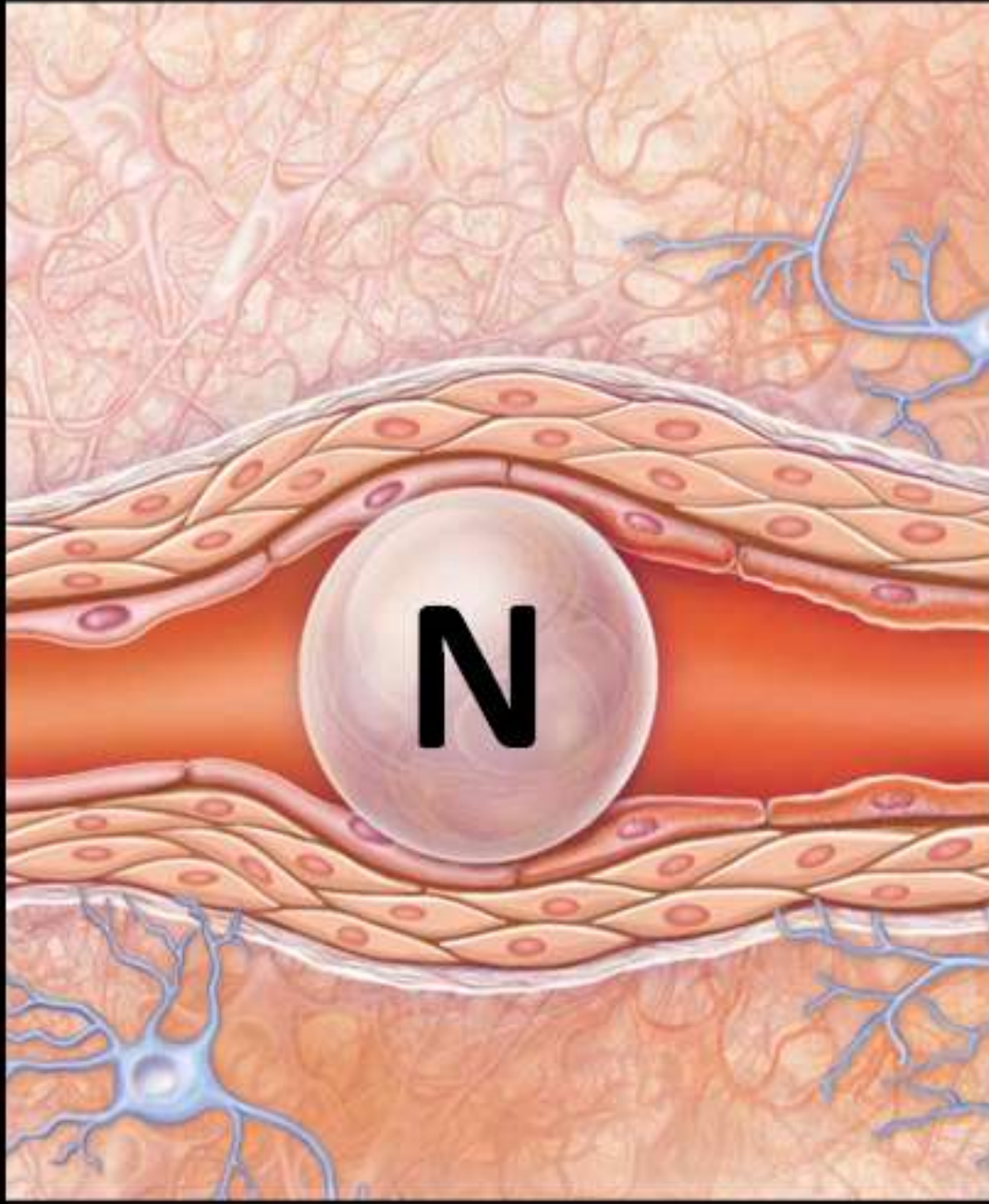
**OAP D'IMMERSION**

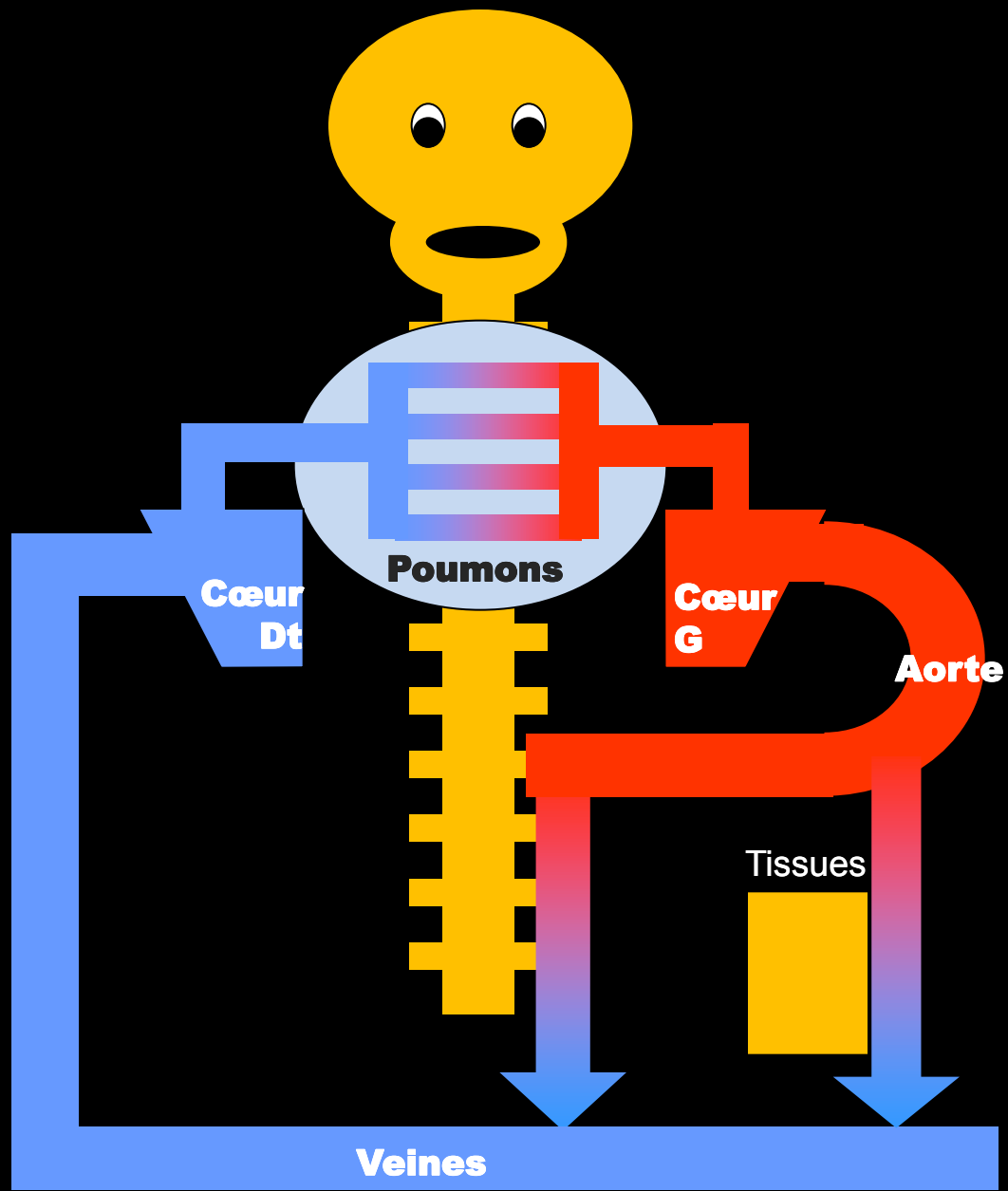


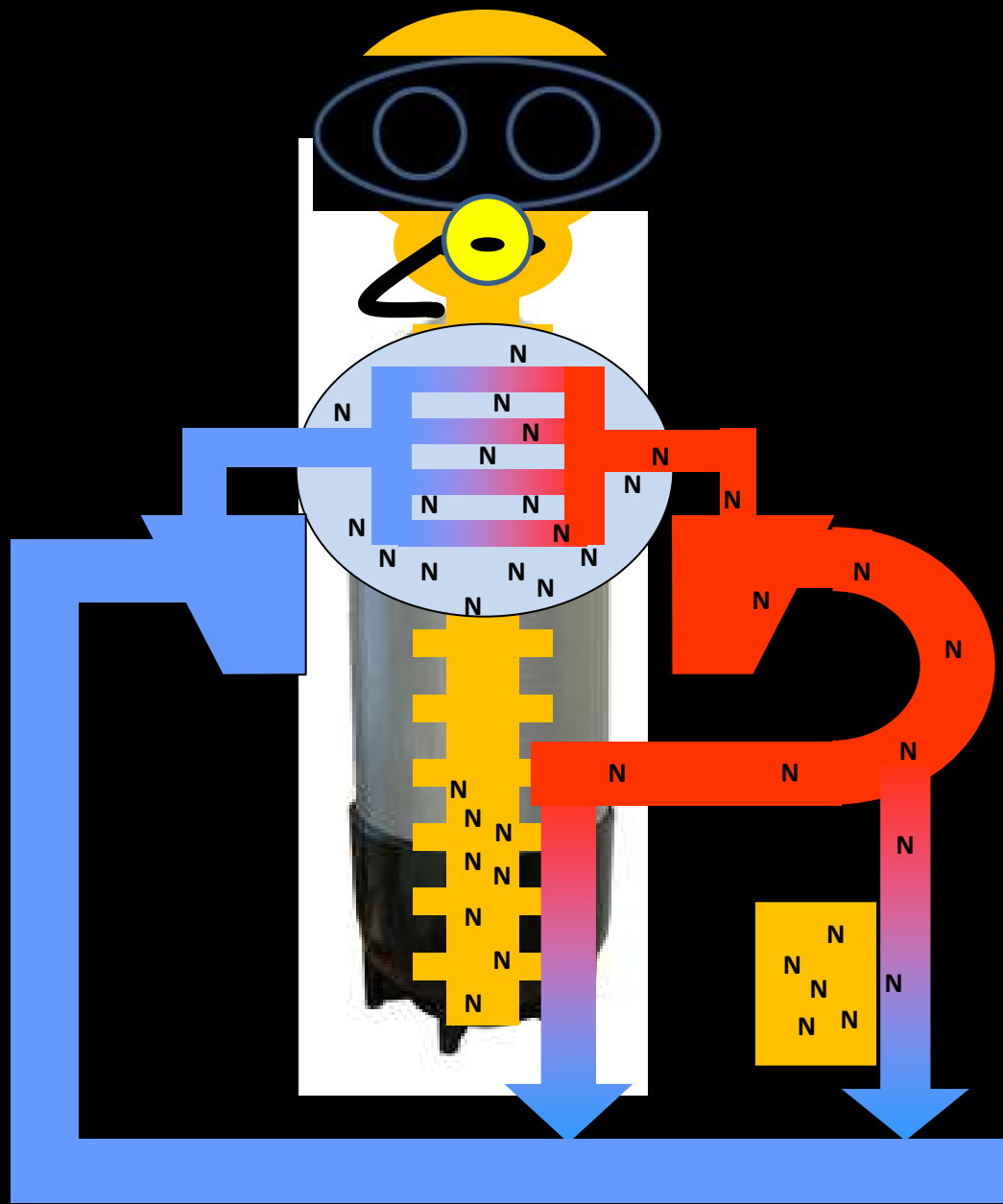
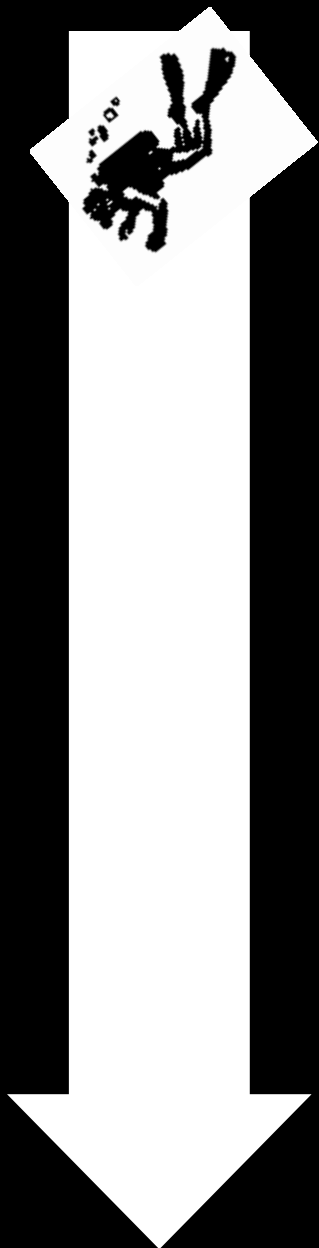
**BAROTRAUMATISME**

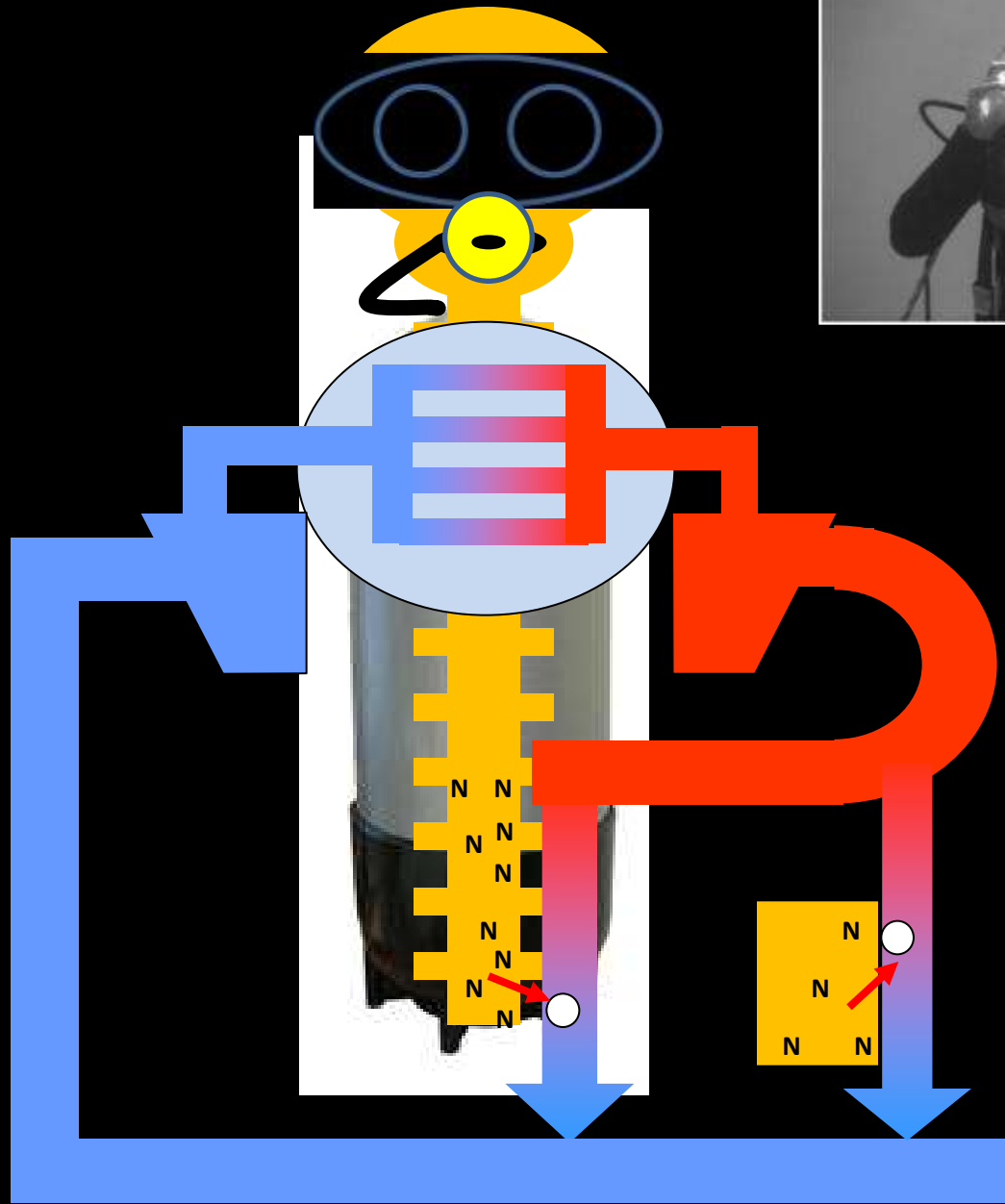
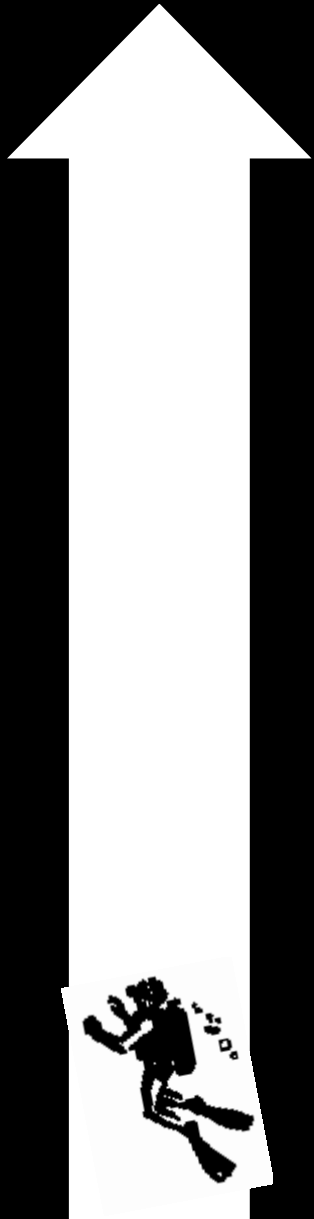


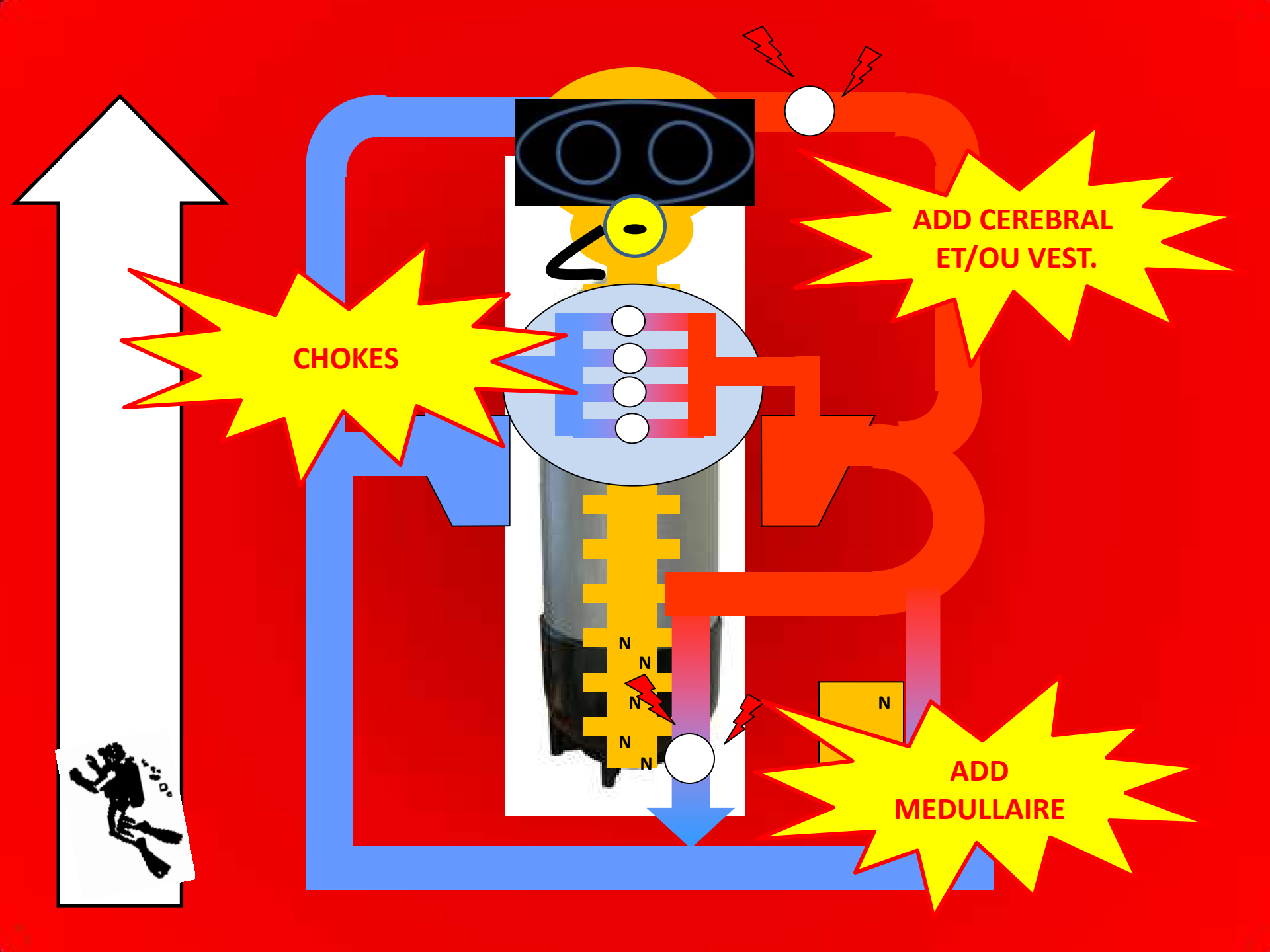
# ACC. DE DESATURATION









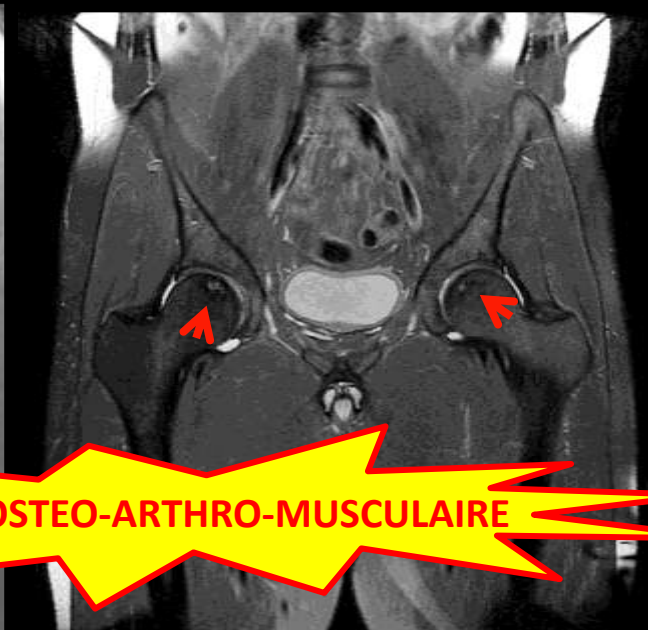


**CHOKES**

**ADD CEREBRAL  
ET/OU VEST.**

**ADD  
MEDULLAIRE**

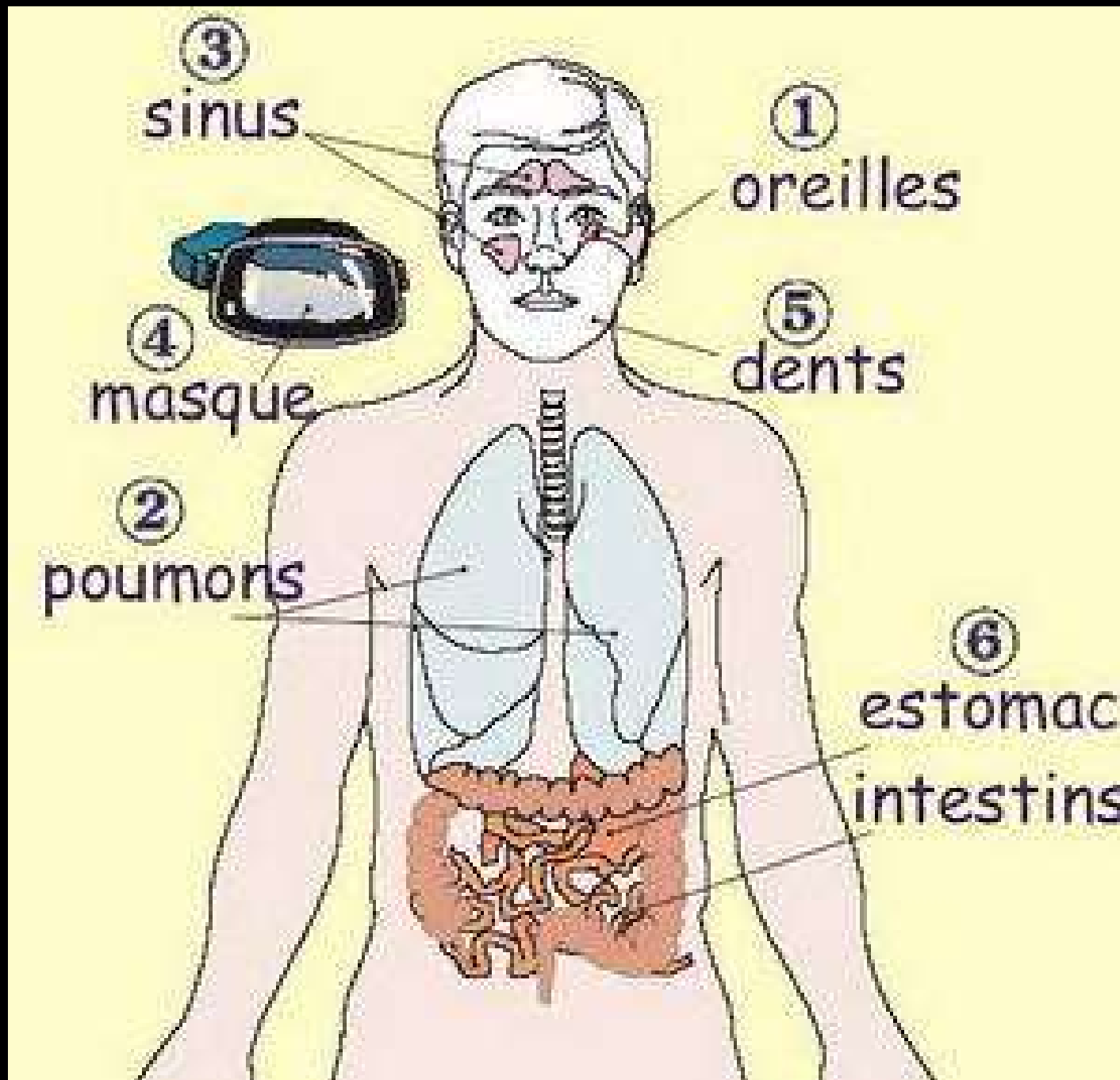


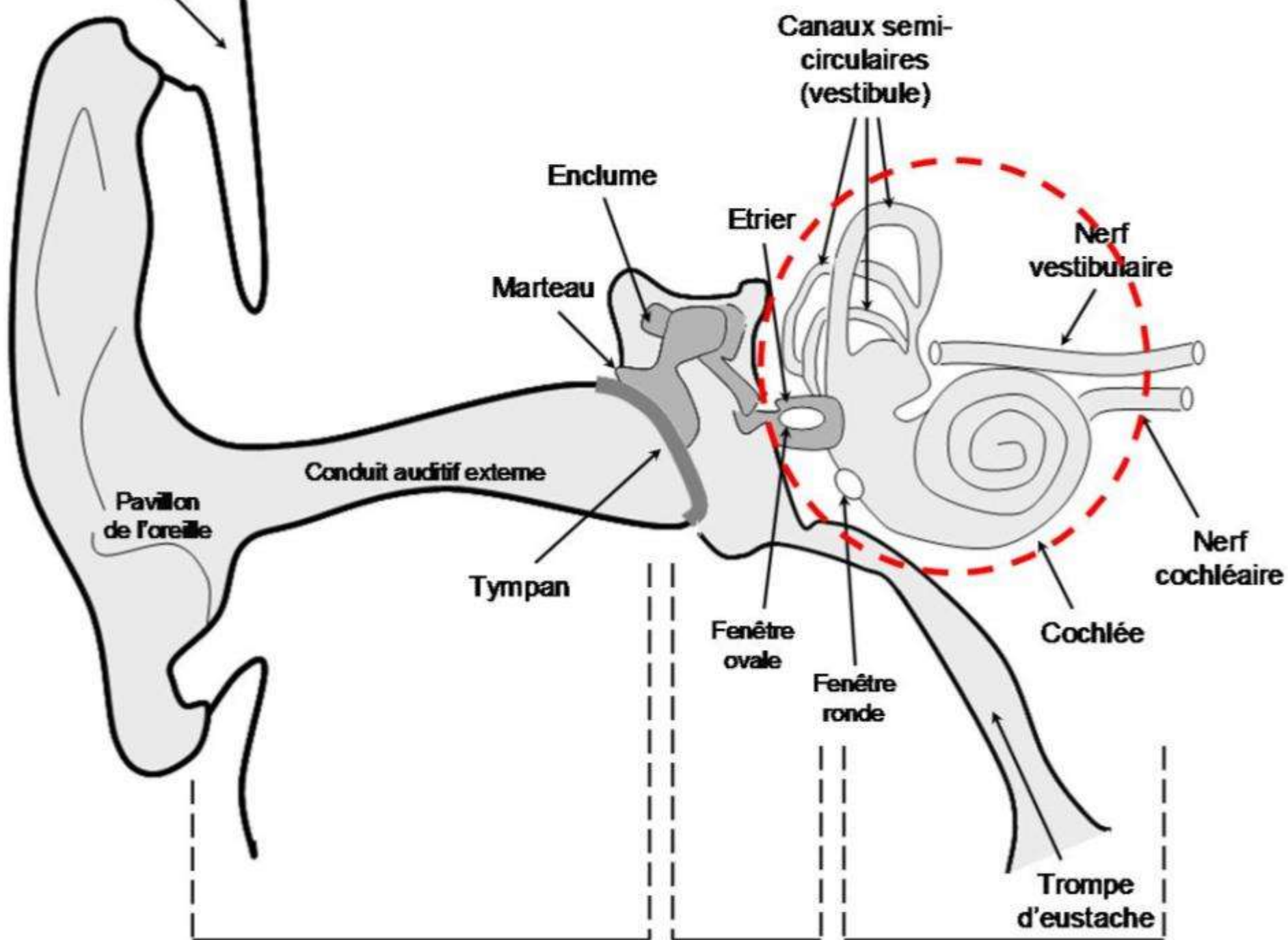




# BAROTRAUMATISME



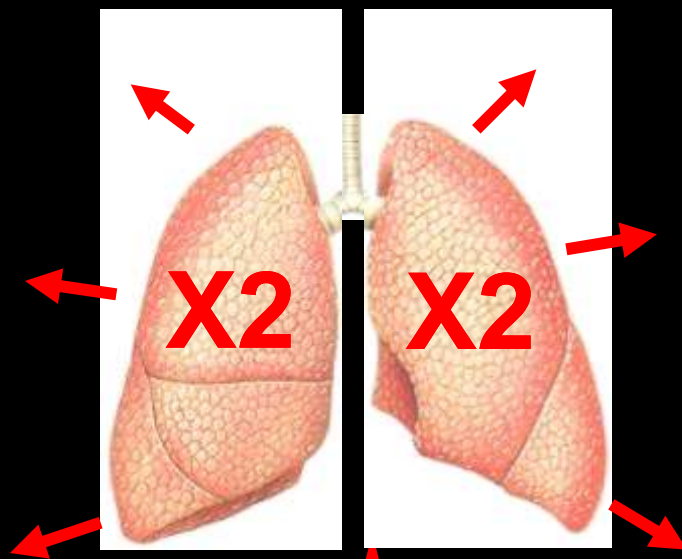




Oreille Externe

Oreille Moyenne

Oreille Interne



10 m.

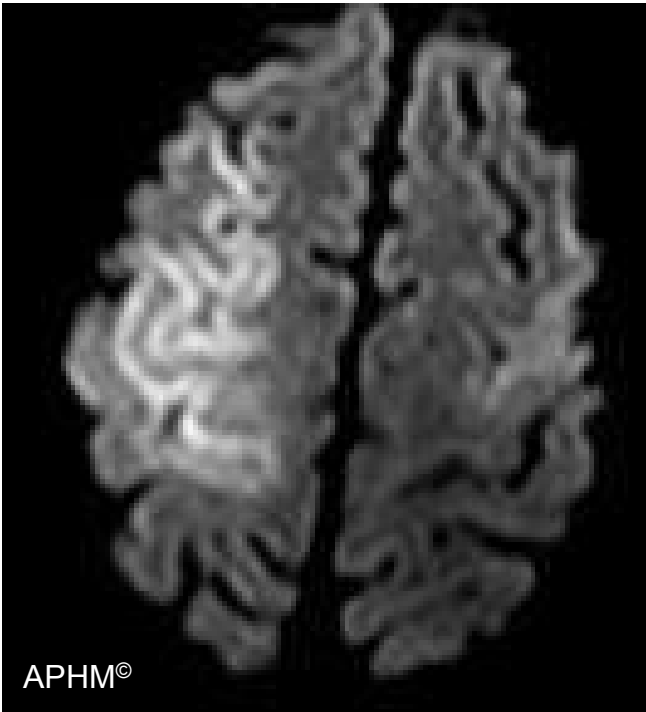
< 5 m

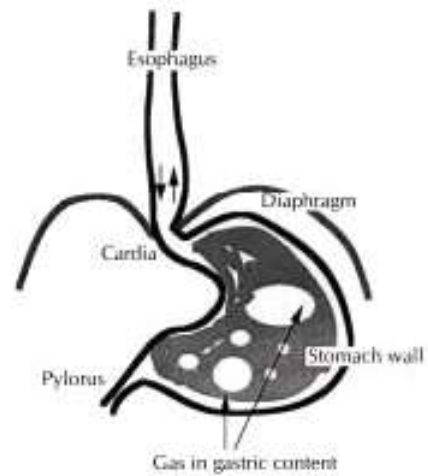
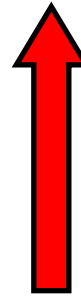
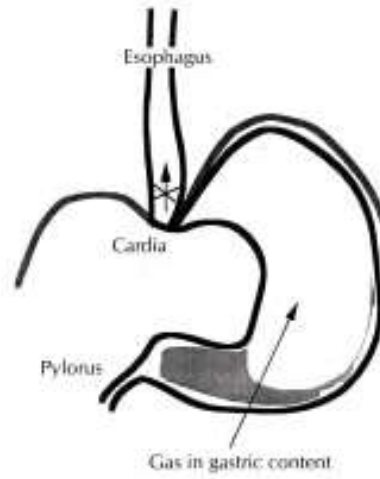


Case Report

# Acute coronary syndrome and cerebral arterial gas embolism in a scuba diver

Pierre-Julien Moro MD<sup>a</sup>, Mathieu Coulange MD, PhD<sup>b</sup>, Olivier Brissy MD<sup>a</sup>, Thomas Cuisset MD, PhD<sup>a</sup>, Jacques Quilici MD<sup>a</sup>, Jean-Philippe Mouret MD<sup>a</sup>, Jean-Louis Bonnet MD<sup>a</sup> and Alain Barthélémy MD<sup>b</sup>

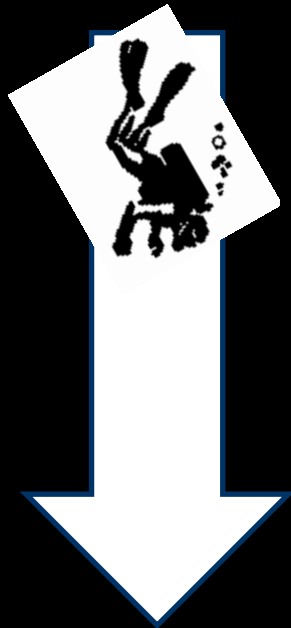






**ACC. TOXIQUE**

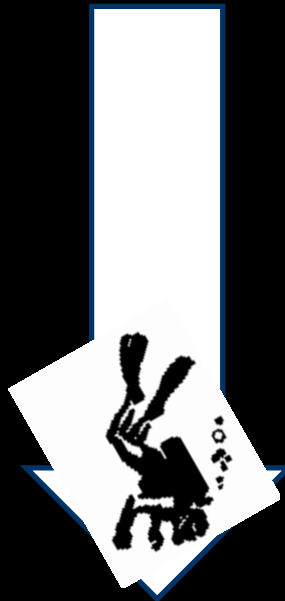




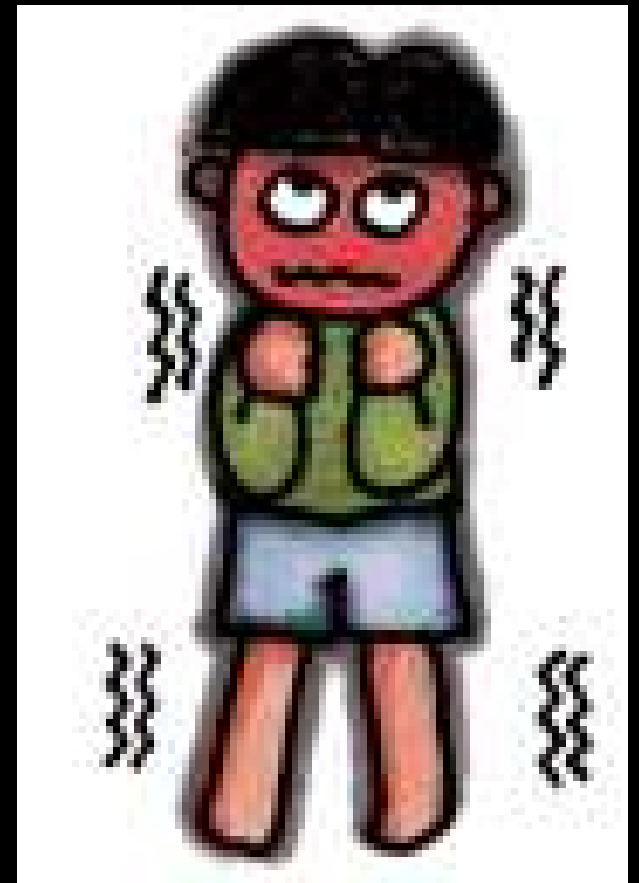
**AZOTE**

A un niveau **clinique**  
*Echelle des Martini de Edmonds*





**OXYGENE**

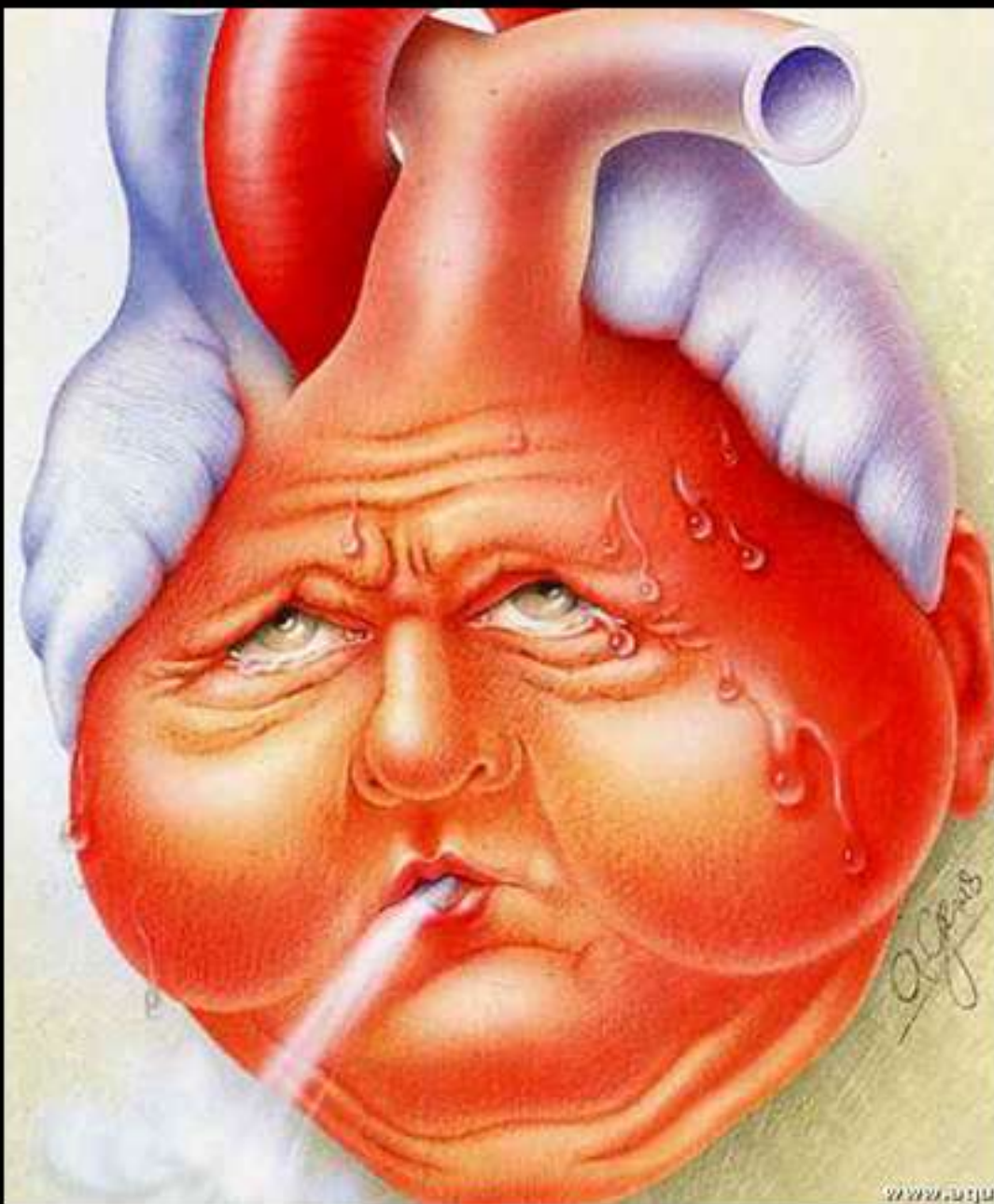




**CO<sub>2</sub> - CO**



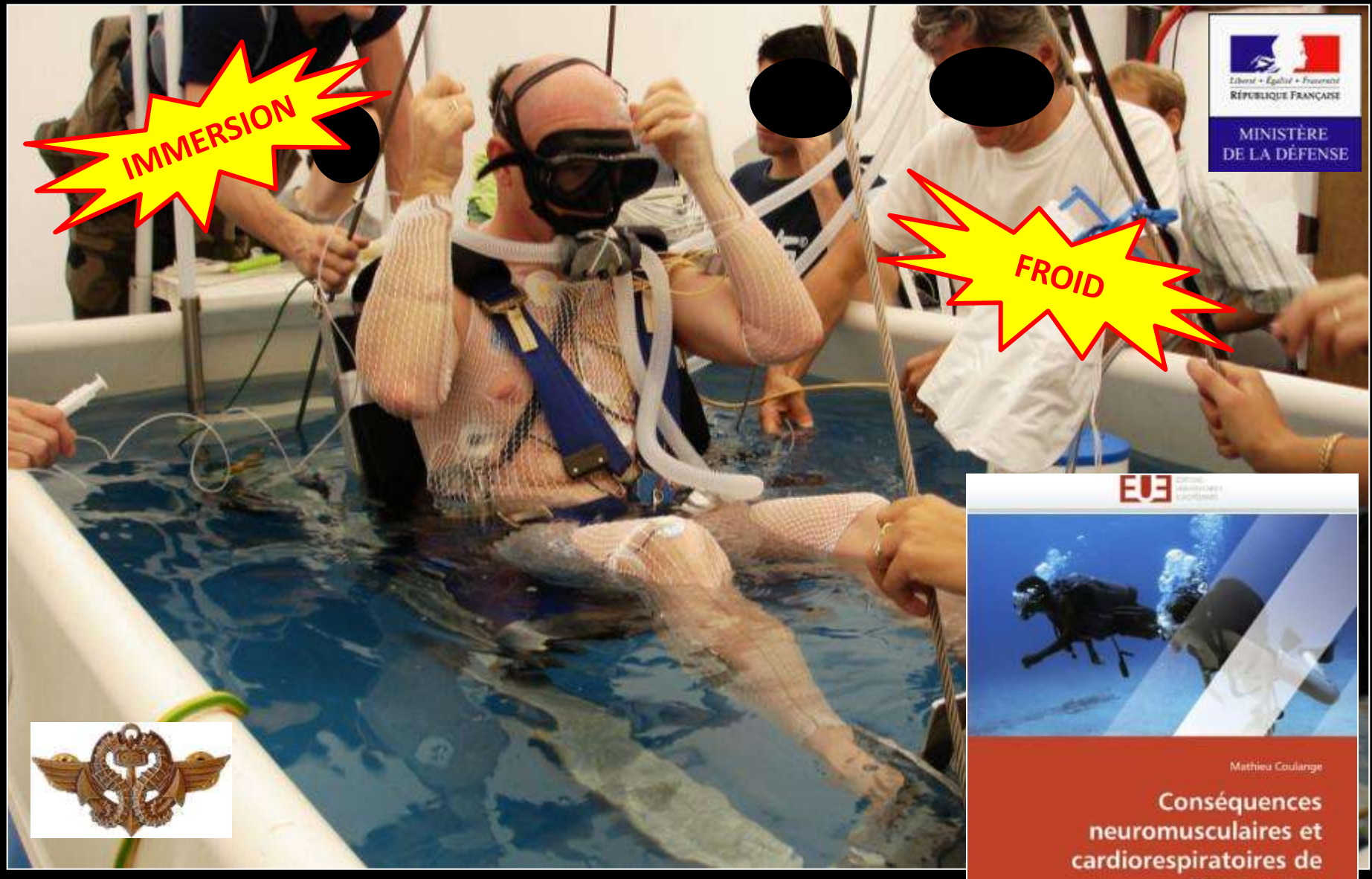
# OAP D'IMMERSION





IMMERSION

FROID



**EUE** ÉVALUATION DES UNITÉS EN MILIEU EXTREME

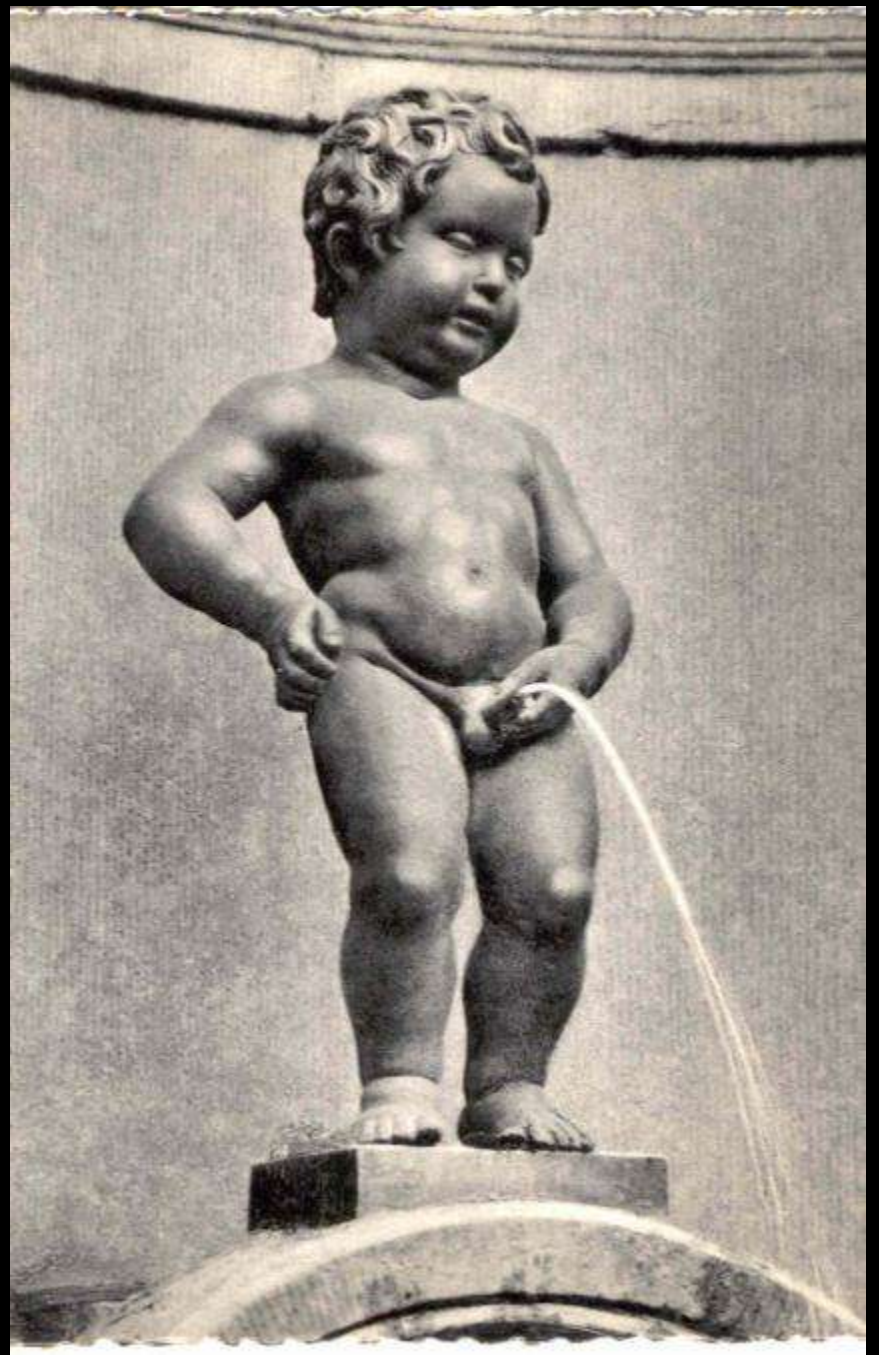


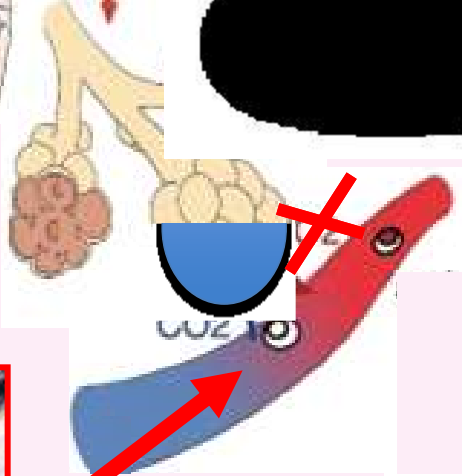
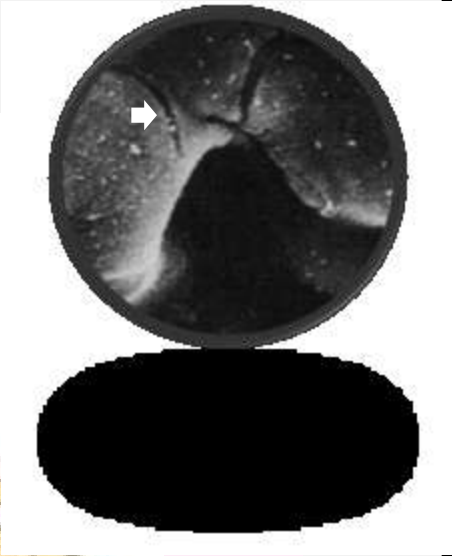
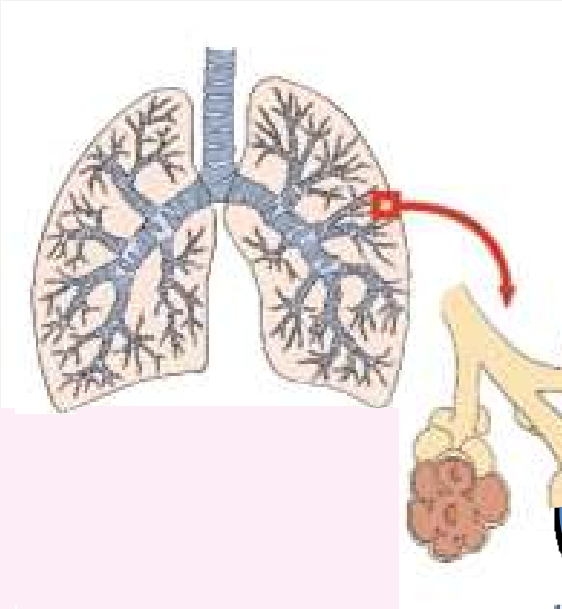
Mathieu Coulangue

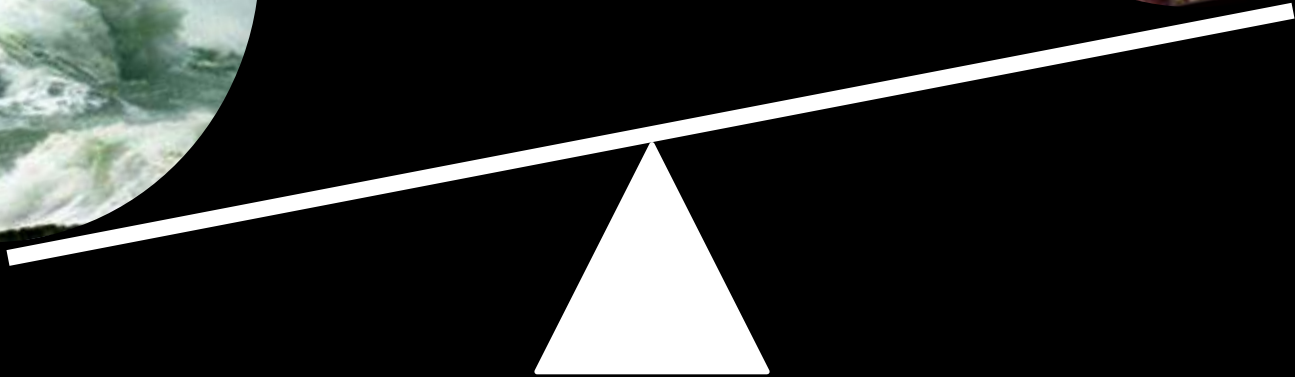
### Conséquences neuromusculaires et cardiorespiratoires de l'immersion

Physiologie intégrée en environnements extrêmes











## L'œdème pulmonaire d'immersion : une cause rare d'accident de plongée potentiellement mortel

Immersion pulmonary oedema: A rare cause of life-threatening diving accident

P.-Y. Cordier <sup>a, b</sup> , M. Coulange <sup>b</sup>, A. Polycarpe <sup>a</sup>, A. Puidupin <sup>a</sup>, E. Peytel <sup>a</sup>

